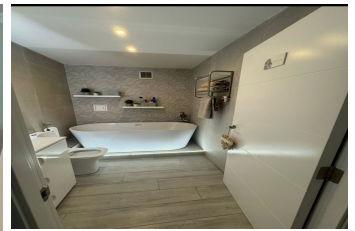




A.E REAL ESTATE

MANAGING ALL YOUR PROPERTY NEEDS



Nelson's View

£360,000

AES2566 | APARTMENT

BEDS: 3 | BATHS: 1 | AREA: 80m²

PROPERTY FEATURES

Service charges: 119.69 Per Month

Partly Furnished

Good condition

Private Parking

Rates: 38.52 Per Month

Category 2: No

Hepps: No

3 Year Residency: Yes

PROPERTY DESCRIPTION

****Elegant Three-Bedroom Home in South District**** Discover this beautifully presented three-bedroom residence located in the popular and family-friendly Nelson's View in the South District. Designed with comfort and convenience in mind, this east-facing home is flooded with morning sunlight, creating a warm and inviting atmosphere, while remaining cool during summer evenings. Situated in a tranquil area close to beaches, this property offers a peaceful lifestyle with the added benefit of nearby amenities. A local school, supermarket, and three different bus routes to town are all just steps from your door, making daily life effortless. The home features a spacious, independent kitchen perfect for family meals and entertaining, complemented by a generous lounge area. Each of the three large bedrooms provides ample space for family members or guests. This property is an ideal choice for a growing family seeking a serene environment to call home. Don't miss the opportunity to own this charming gem in the sought-after South District. Please contact us for further information on 56021966 or email us at info@aerealestate.gi

📍 3 Cornwall's Parade

☎ (+350) 560 21966 ✉ info@aerealestate.gi

© 2026 AE Real Estate CMS. All Rights Reserved.